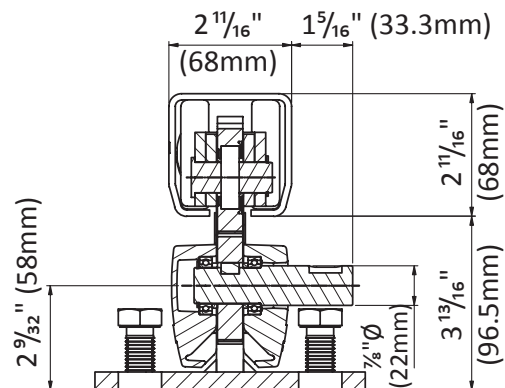
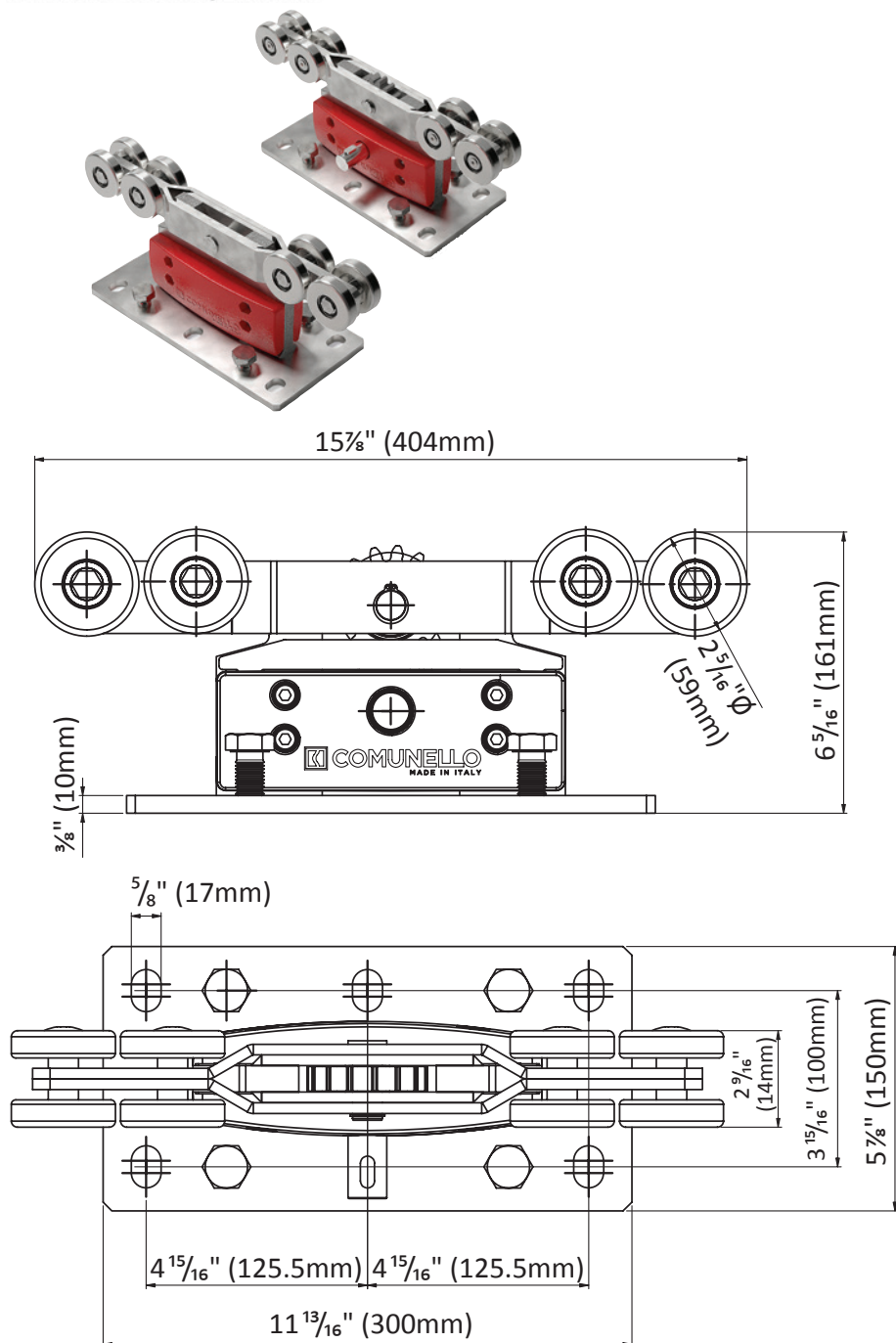


CGS-500.8M

- Small Primary/Secondary
8-Wheel Carriage Set
- Driven Primary Carriage
 - Secondary Carriage



USE: Carriages with integrated transmission for cantilever gates.
TYPE: 8 wheel Integrator Master & Slave carriages kit.
FIXING: Use 6 + 6 anchor bolts CG-348 M16 or appropriate anchors (both not supplied). For the dimensions of the concrete base, see table 1. The base allows height adjustment using the 4 M16 screws and the special counter-plate CG-05.
MATERIAL: Electrolytically Galvanized Steel and Painted Aluminum.
RECYCLING: Dispose of the main structure (wheels, plates and pins) as ferrous material and the side protections as aluminum, according to the laws of the country of installation.
PARTS SUBJECT TO WEAR: Bearings, wheels and gears.
WARNINGS: The manufacturer reserves the right to change the characteristics of the product according to their needs without prior notice. The manufacturer is not liable for even partial modifications of the product and the declared performances are valid only if the installation methods indicated in the instructions and performed by qualified personnel are followed.

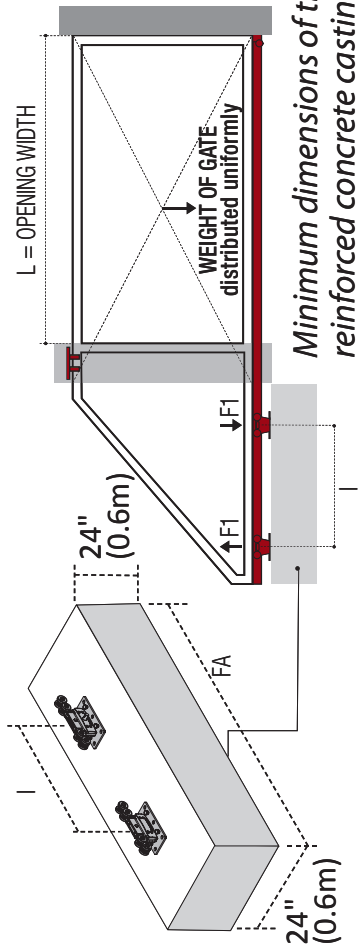
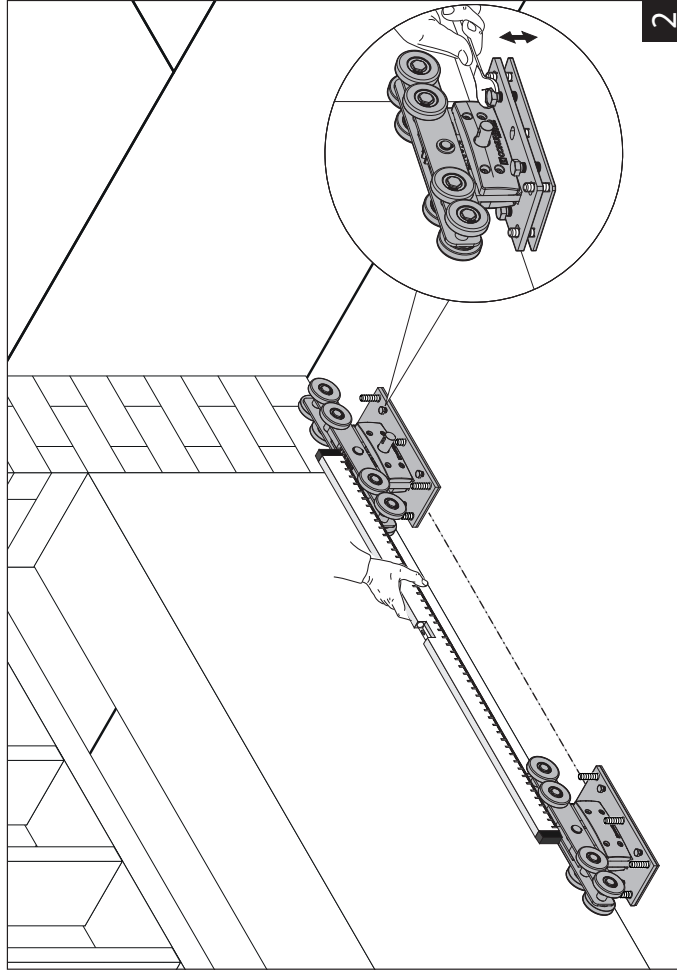
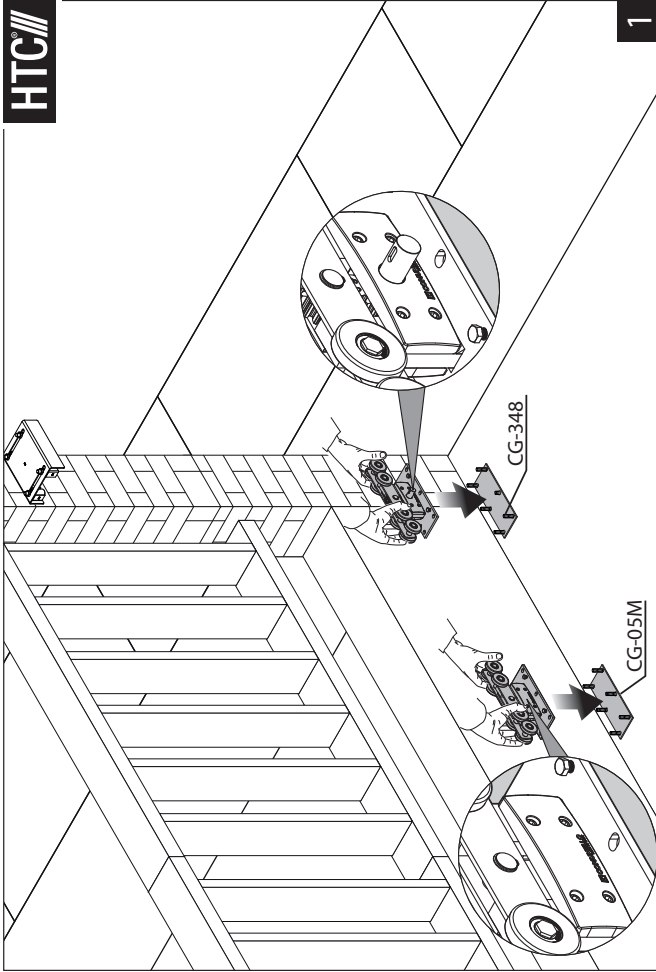
TECHNICAL CHARACTERISTICS				
WEIGHT OF PART			21,5 Kg	
CAPACITY (maximum force on the carriage axis), IT IS NOT THE WEIGHT OF THE GATE			F1 max 1200 Kgf	
COMBINABLE COMPONENTS			CGS-345M	
MAINTENANCE FREQUENCY				
PRIVATE HOME	BUSINESS	WAREHOUSE	CONDOMINIUM <20 UNITS	CONDOMINIUM > 20 UNITS
2 YEAR*	2 YEAR *	1 YEAR *	6 MONTHS*	6 MONTHS
Check the functionality and integrity of carriages.				
Clean lower area of contact between wheels and rail				
Make sure the carriages are integral with the concrete base				
Grease the gears with the appropriate grease (FIG.4)				
Check gears and racks wear				
Check fastening of the locking screws of the rack to the monorail				
*The scheme refers to a normal workplace (not marine or particularly aggressive environments).				

CGS-500.8M - 8 wheel carriage with integrated transmission

HEIGHT		BASE PLATE LENGTH		BASE PLATE WIDTH		AIR GAP (Grade to Bottom of Track)		FULL HEIGHT (Grade to Top of Track)		BOLT HOLE SIZE		BOLT HOLE SPACING (L) (Center-to-Center)		BOLT HOLE SPACING (W) (Center-to-Center)		CARRIAGE PLATE THICKNESS	
Inch	mm	Inch	mm	Inch	mm	Inch	mm	Inch	mm	Inch	mm	Inch	mm	Inch	mm	Inch	mm
6 5/16	161	11 13/16	300	5 7/8	150	3 13/16	96.5	6 1/2	164.5	15/16 x 5/8	24x17	9 7/8	251	3 15/16	100	3/8	10

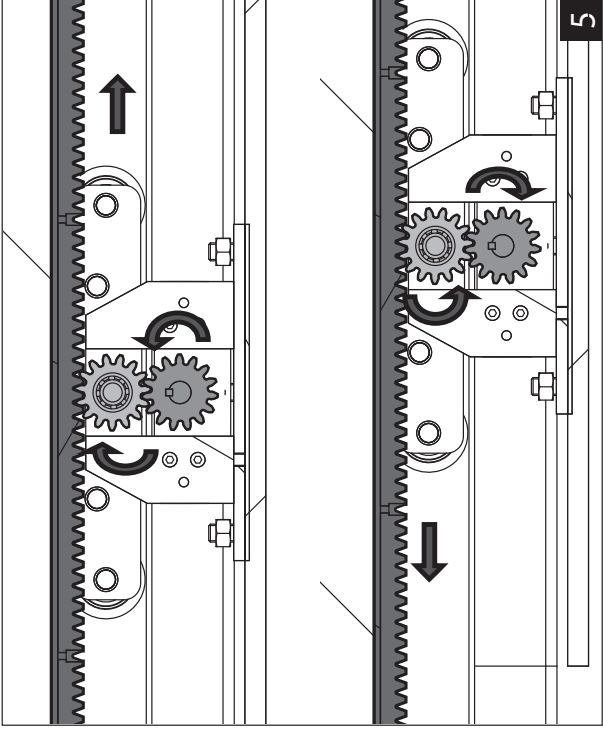
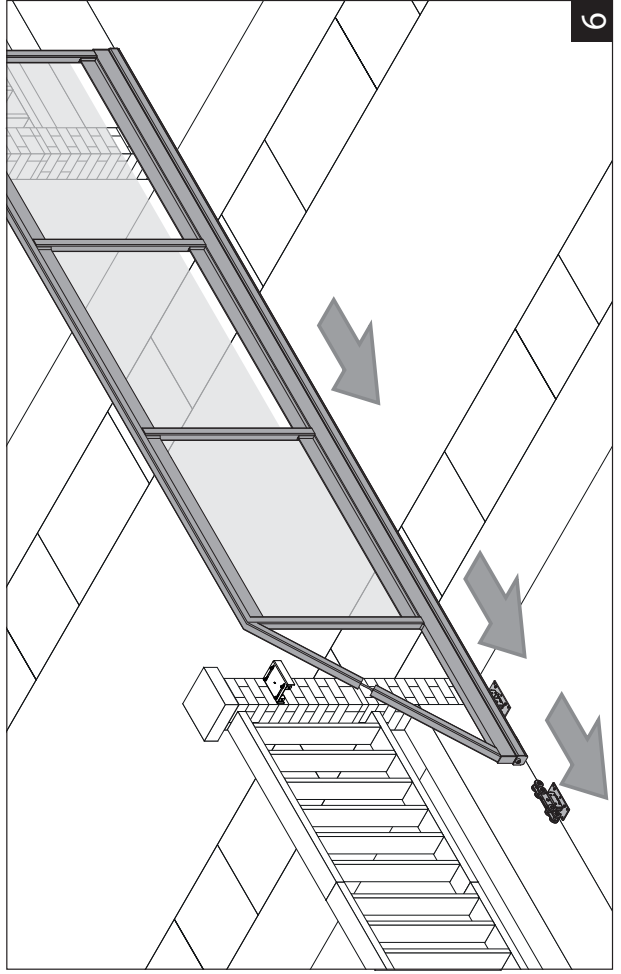
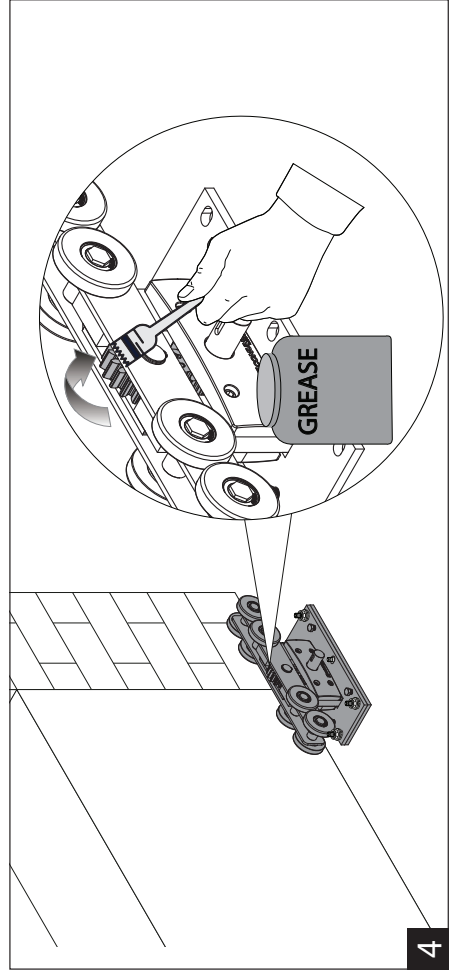
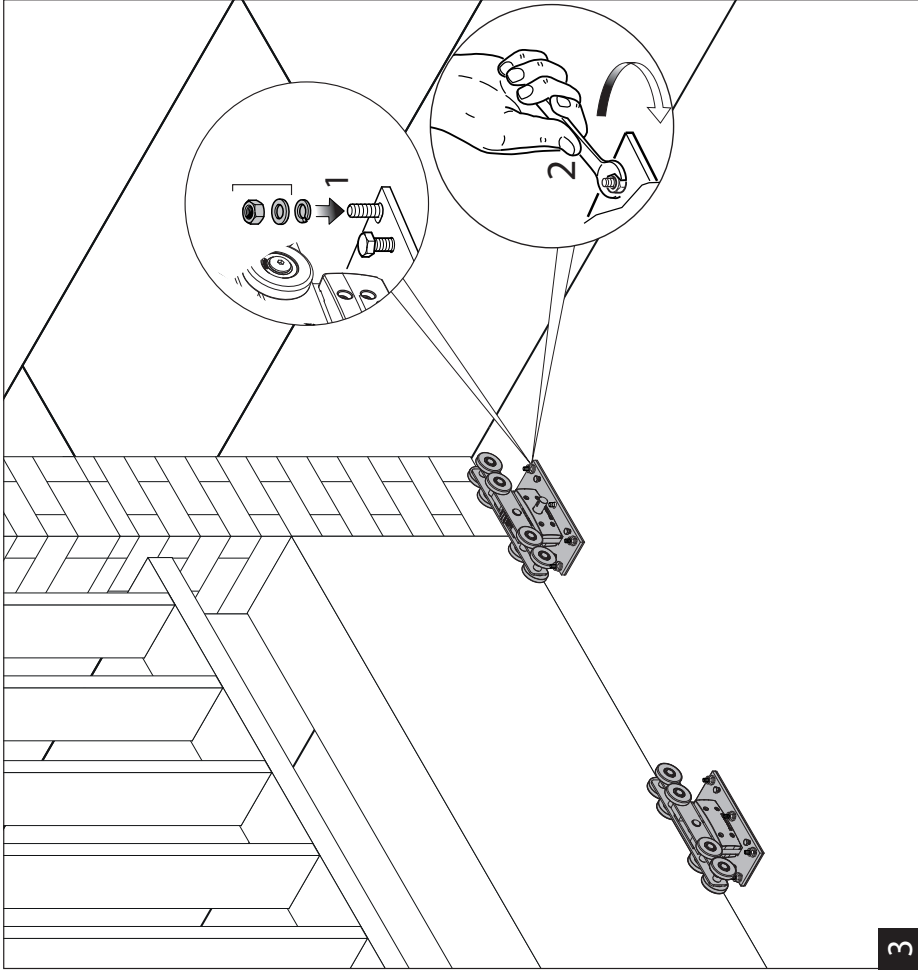
Illustrations not to scale and are for reference only. Imperial units shown are for reference only, use millimeters for most accurate sizes.

All pictures, technical drawings and related specifications belong to Fratelli Comunello Spa and they are defended by rules of copyright.
All uses not expressly authorized will be legally prosecuted. Product specifications are subject to change without notice.



CGS-500.8M (F₁max=1100 Lbs)

	L=6'7"		L=9'10"		L=13'2"		L=16'5"		L=19'8"		L=23'	
Weight (Lbs)	FA (in)	I (in)	FA (in)	I (in)	FA (in)	I (in)	FA (in)	I (in)	FA (in)	I (in)	FA (in)	I (in)
220	48	20	60	32	67	40	79	52	91	60	99	71
330	48	20	60	32	67	40	79	52	91	60	99	71
440	48	20	60	32	67	40	79	52	91	60	99	71
550	48	20	60	32	67	40	79	52	91	60	99	71
660	48	20	60	32	67	40	79	52	91	60	99	71
770	52	24	60	32	67	40	79	52	91	63	103	75
880	56	28	67	40	79	52	91	63	103	75	115	87
990	60	32	71	44	87	60	103	75	119	91	134	107
1100	67	40	83	56	99	71	115	87	134	107	154	126



HTC

COMUNELLO